



Vortex Flow Sensors

For applications with higher flow rates



Tobias Diehl
Senior Technical Sales Engineer



Proven principle - higher flow rate

High quality flow sensors, made of brass or stainless steel for highest durability & performance.

Our new **Vortex flow sensors** VVX32 and VVX40 are characterized by their robust design, optimized temperature measurement and wide flow range.

Specially developed for:

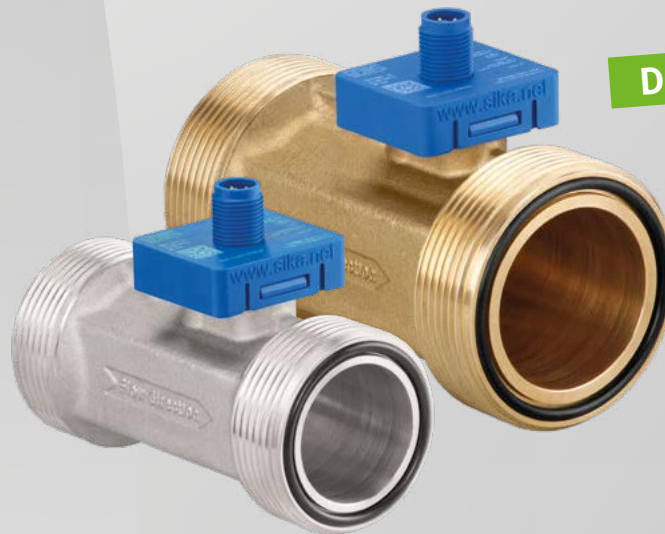
- Large heat pumps
- Fresh water stations
- Water treatment plants
- Chiller
- UV Desinfektion für Wasser



Known SIKA quality



Over 50 years of experience with flow sensors in heating appliances and a long list of well-known heat pump manufacturers, who already swear by our Vortex flow sensors, speak for themselves.



DN40 → 22...400 l/min

DN32 → 12...250 l/min

Product features

- Fully encapsulated sensor element (no direct contact with the medium)
- With integrated temperature measurement
- DN32 / DN40 each as brass or stainless steel version
- Best price-performance ratio
- Excellent as a replacement for more expensive measuring principles (e.g. MID) in large nominal sizes





SIKA Dr. Siebert & Kühn GmbH & Co. KG

Struthweg 7 - 9

34260 Kaufungen / Germany

Phone +49 5605 803-0

Fax +49 5605 803-555

info@sika.net

www.sika.net